

# Golfwith™ SMART CADDIE User Manual \_ ENGLISH ver.

Ver\_1.2

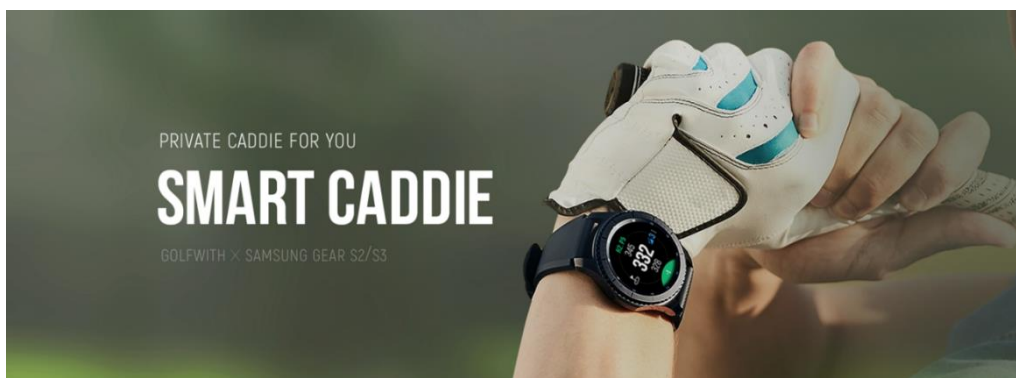
## Contents

1. Golfwith™ SMART CADDIE
2. SMART CADDIE Log-In & Golfwith™ Membership Registration
3. SMART CADDIE User Guide ① : Golf Course Search & Download
4. SMART CADDIE User Guide ② : Distance Information & Settings
5. SMART CADDIE User Guide ③ : Course View & Green Map
6. SMART CADDIE User Guide ④ : Scorekeeping on Scorecard
7. SMART CADDIE User Guide ⑤ : Finishing Up a Round & Contact Us

## 1. Golfwith™ SMART CADDIE

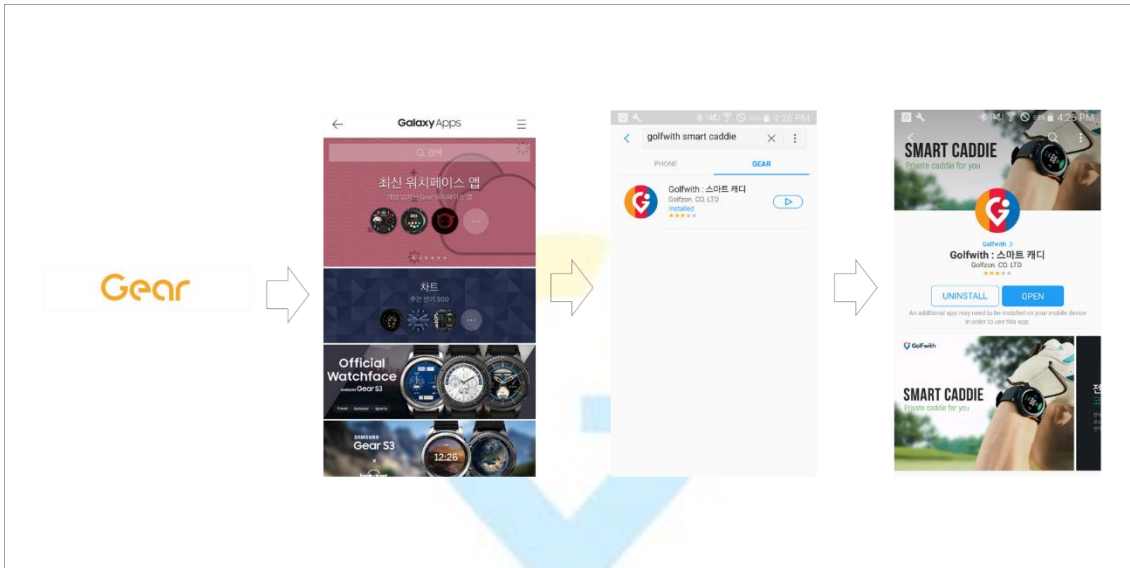
### 1) What is a Golfwith™ SMART CADDIE?

- SMART CADDIE is a golf rangefinder app available exclusively for the Samsung Gear Series. This app provides yardage information of over 60,000 golf courses worldwide.
  - **Distance information** : Through GPS tracking, SMART CADDIE provides the distance from your location to the front, middle, and the back of the green.
  - **Course View & Green Map** : SMART CADDIE provides hole view based on the high-resolution image and green undulation map for 350 golf courses in Korea.
  - **Scorekeeping** : Once you are finished with a hole, an automatic screen will pop up for you to input your scores. These scores can be accessed and managed by signing into Golfwith GOLF SCORECARD app or by signing into our website (golfwith.golfzon.com).
  - If our app does not have the golf course you are looking for, you can request a golf course to be updated by contacting us via website (golfwith.golfzon.com).



## 2) How to Install Golfwith™ SMART CADDIE

- Sync your phone (supports both iOS and Android) with your Gear watch via Bluetooth.
- On your smartphone, go into the SAMSUNG GEAR App, search “Golfwith : SMART CADDIE” and install the app.
- ※ If you have the Samsung Gear S3 Golf Edition, the SMART CADDIE app is already pre-loaded onto the watch. All you need to do is to sync your phone with the watch and update SMART CADDIE App via SAMSUNG GEAR App.



## 3) Activating GPS function of Samsung Gear

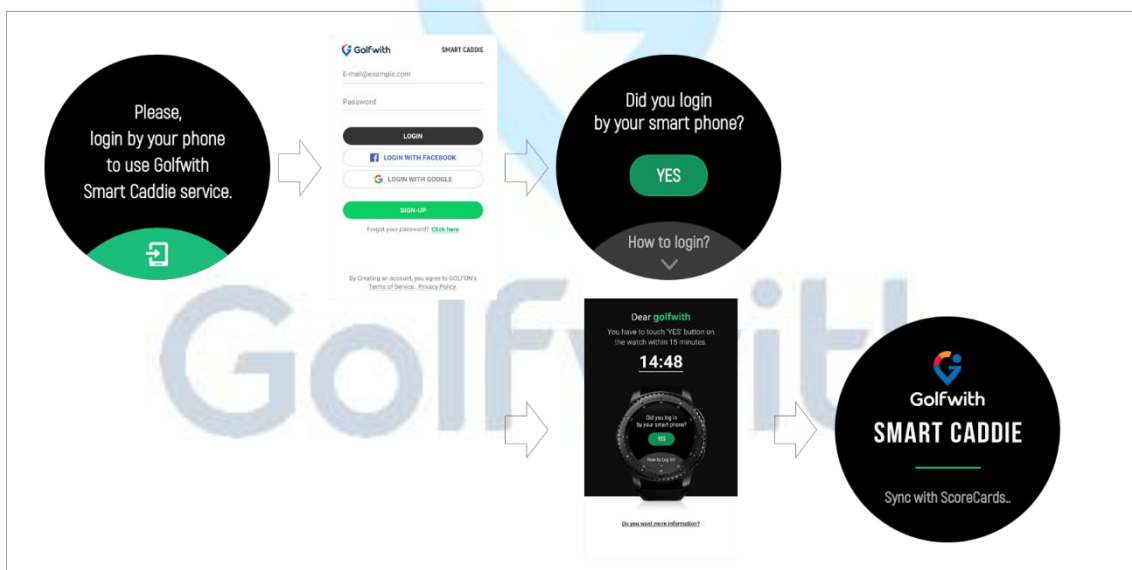
- Because SMART CADDIE works based on GPS tracking, it is important that the watch's Bluetooth and GPS location is turned on when using the app.
- ※ Gear S2 does not provide GPS function ; it has to be connected to the smartphone and use GPS information of the smartphone. So you have to carry both smartphone and Gear.
- To operate the GPS function of the Gear, we recommend you to use it first in outdoors for about 5 to 10 minutes.
  - Also, you can make sure the GPS function works by going into “Play ► Nearby” menu.

## 2. SMART CADDIE Log in & Golfwith™ Membership Registration

SMART CADDIE is accessible after signing up and logging in. You can sign up with your email address, Google account, or Facebook account. All of Golfwith services (Golfwith : GOLF GPS, Golfwith : SCORECARD, and Golfwith : SMART CADDIE) can be accessed through the same email address you sign up with.

### 1) SMART CADDIE Log-In

- After syncing your smartphone with your Gear watch, launch the Golfwith SMART CADDIE app.
- The log-in page will appear on the gear, then tap the lower part of the page so that you can log in on your smartphone.
- The log-in page will appear on your phone, where you can create and log-in with your Golfwith account
- Within the next 15 minutes after the logging in on your smartphone, the “Confirm” button will appear on the SMART CADDIE app on your watch.



### 2) Golfwith™ Membership Registration

- All of Golfwith™ apps can be accessed through the same email address you sign up with. You can sign up with your email address, Google account, or Facebook account.
- When the log-in page appears on your smartphone, click on “SIGN-UP,” and put in your email address and make a password.
- The log-in page also has options, “Log in with Facebook Account” and “Log in with Google Account,” so that you can choose to sign up with existing SNS accounts.

### 3. SMART CADDIE User Guide ① : Golf Course Search & Download

To search and download the golf courses, select “PLAY” on the main screen of the SMART CADDIE app and there will be 3 options, Favorite / Nearby / Search.

#### 1) Favorite

- “Favorite” menu provides the list of the courses you have downloaded before.
- The downloaded courses can be accessed without using data.

#### 2) Nearby

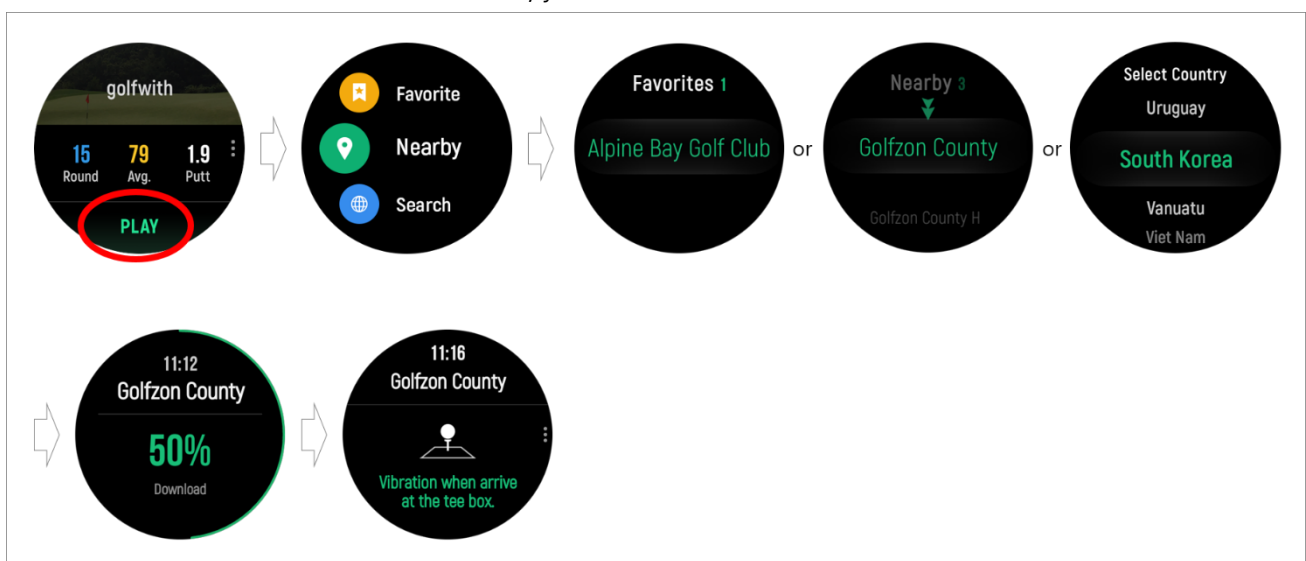
- “Nearby” menu shows all the golf courses near your location (10km perimeter)
- If you download the golf course when you are at the location, we recommend that you find golf course outdoors for a better GPS reception.

#### 3) Search

- “Search” menu allows you to choose the Country, City, and the golf course you are looking for so that you can download it. (It is faster to search the country, city, and the golf course by rotating the bezel of the watch)

#### 4) Download Golf Course

- Select the golf course name to download the map data. Make sure your watch is connected to the internet when downloading.
  - For Bluetooth watch models, make sure you are connected to your smartphone and your smartphone is connected to the internet. Or make sure your watch is connected to the Wifi.
  - For LTE watch models, you can download the course via cellular data.



#### 4. SMART CADDIE User Guide ② : Distance Information & Settings

Once you have downloaded the golf course and have the GPS location services on, you are ready to start your round. After selecting a golf course you would like to play and go to the Tee Box, the app will automatically identify the hole.

##### 1) Distance Information

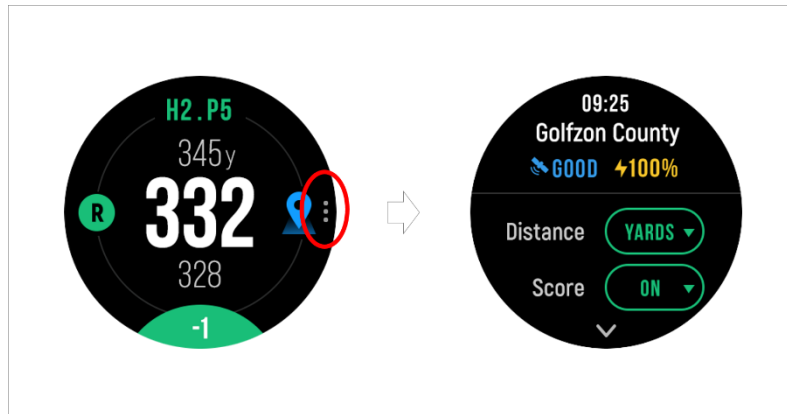
- Provides the distance from your location to the front, middle, and back of the green.
- If there are left and right holes on the green, you can select which one you would like to use by selecting [ **L** ] and [ **R** ] button on the screen.
- Once you are near the green, it will notify you by showing, “Green Side.”
- Once you have finished the hole and have left the green
  - If the Scorecard feature is “ON” : it will automatically provide a screen where you can input your scores.
  - If the Scorecard feature is “OFF” : it will automatically move onto the next hole’s distance information.
- You can change the holes manually by rotating the bezel of the watch.



##### 2) Settings


- The Settings page shows the GPS reception, battery life, distance units, and Scorecard feature.
- SMART CADDIE provides 2 distance units : Yards and Meters
- Scorecard feature lets you choose “On” to input your scores after each hole, or “Off” to

not using the feature.



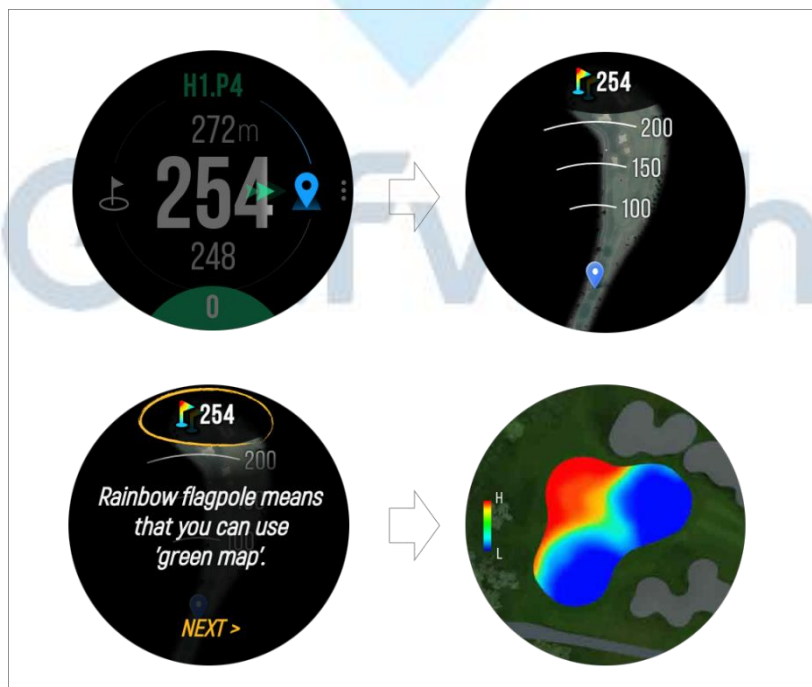
## 5. SMART CADDIE User Guide ③ : Course View & Green Map

### 1) Course View

- There will be a Course View icon[- Course View provides a full picture and distance information of the hole you are currently on.
- The Course View can be zoomed in and out by the bezel of the watch.

### 2) Green Map

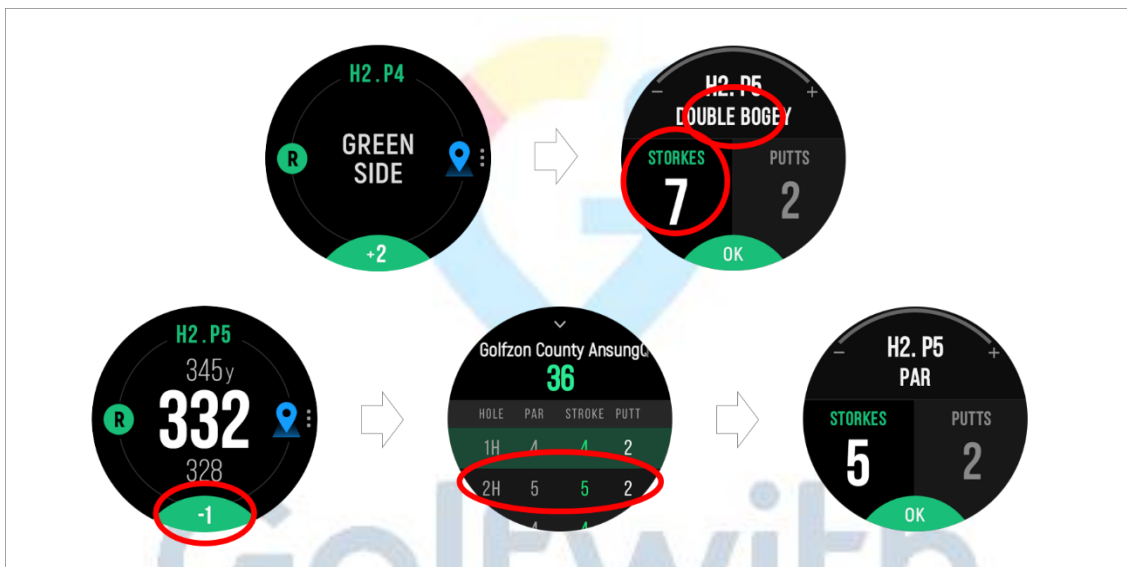
- There are approximately 350 golf courses, exclusively, in Korea that have the green undulation map.
- When there is a rainbow flag on the left side of the screen, it means that the course has the green map.
- When there is a green flag on the left side of the screen, it shows that the course does NOT have the green map.
- The undulation map provides colors to show the depths and the heights of the green. The red color shows that the hill is high and the blue shows that the hill is low.



## 6. SMART CADDIE User Guide ④ : Scorekeeping on Scorecard

### 1) Input Scores on Scorecard

- If the Scorecard feature is turned on, score input screen should automatically pop up after each hole.
- Scorecard allows the user to input both STROKE and PUTT, scores are calculated automatically using stroke and putt information.
- Input the scores by using the bezel of the watch and click OK. Once submitted both SROKE and PUTT scores, the scores are saved.
- To modify the scores during the round, click the button at the bottom of the distance screen which will directly moves to the page where you can modify your scores.



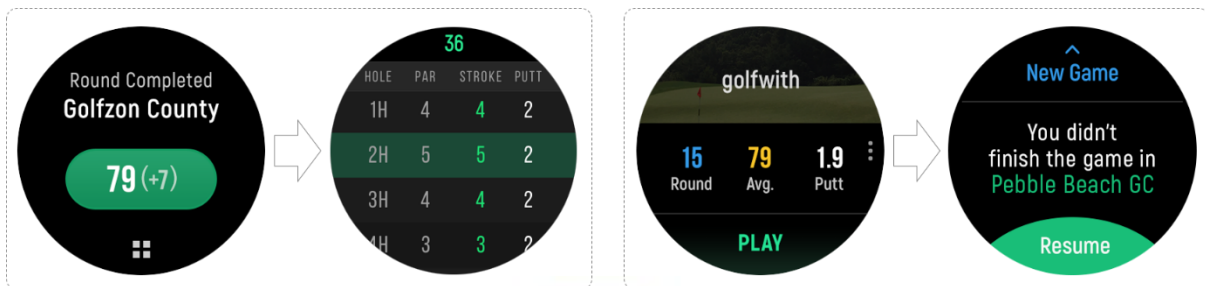
### 2) Scorekeeping

- Scores can be accessed and managed by signing into Golfwith GOLF SCORECARD app or by signing into website(golfwith.golfzon.com).
- By logging in with your Golfwith account on Golfwith : Scorecard app, you can access your scores.
- By logging in with your Golfwith account on the website, the scorecard is accessible by going to SCORECARD ► MY SCORECARD and selecting the round on the list.

## 7. SMART CADDIE User Guide ⑤ : Finishing Up a Round & Contact Us

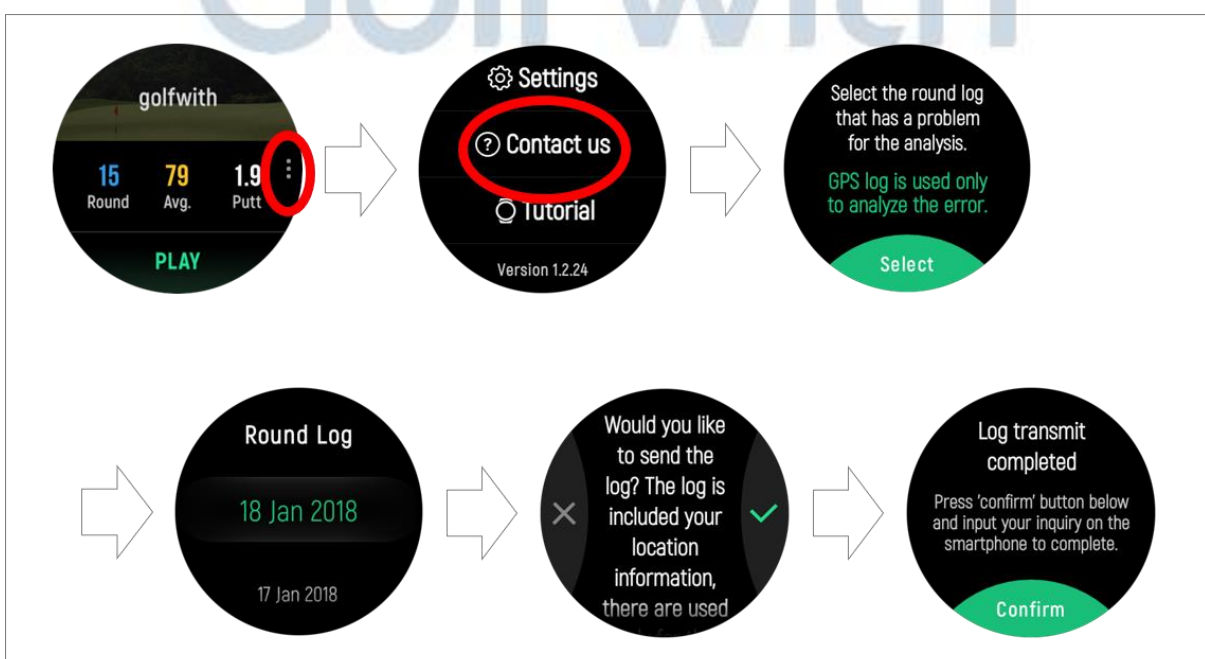
### 1) Finishing Up a Round

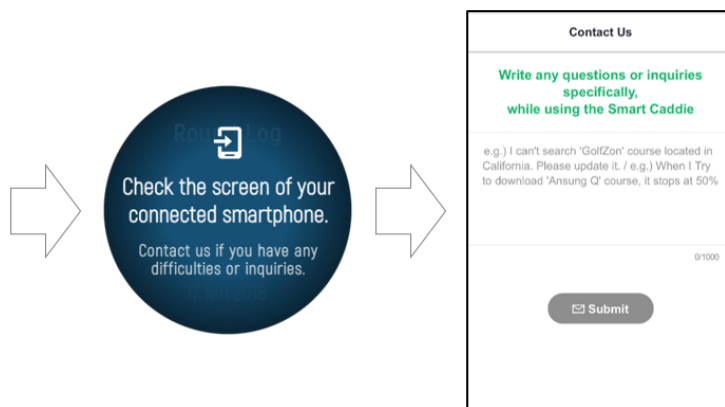
- Once a round has been completed, whole scores of the round will appear.
- If the app had some error and shut down unexpectedly, you can go back to the place it stopped you to continue your game.



### 2) Contact Us

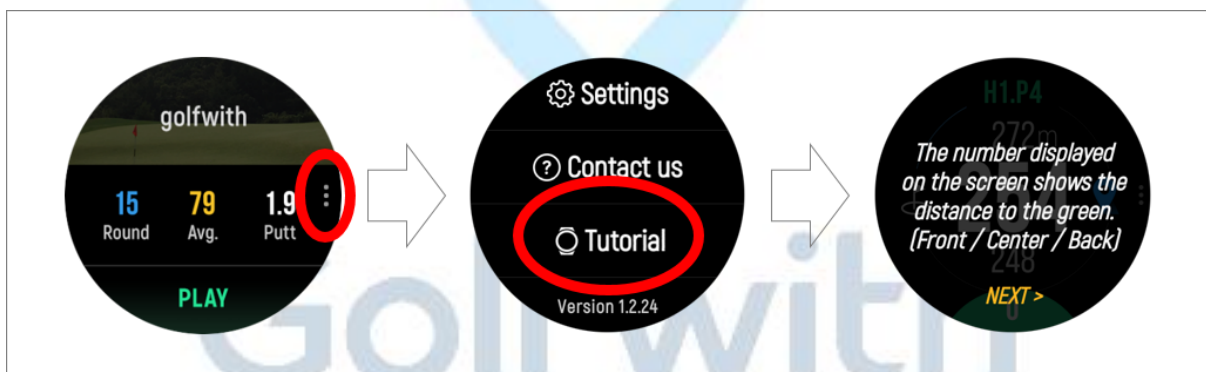
- For any inquiries about the SMART CADDIE, click on the right side of the main screen and click "Contact Us."
- User GPS log is transmitted for analyzing the error. Once you have confirmed sending in your log data, you can input further information about your inquiry via smartphone web browser.
- Also, send in the information of the model of your smartphone and gear to analyze problem precisely.





### 3) Tutorial

- Provides all the features of the SMART CADDIE (how to download golf courses, check the course view and green map, and input scores).
- Go to the main screen of the “SMART CADDIE ► Menu ► Tutorial” for the service tutorial and practice using the SMART CADDIE.



Golfwith™ SMART CADDIE Green Map Supported Golf Course List  
\_ Korea, Republic of (2017.10.17 updated)

Please refer the link below :

<http://golfwith.golfzon.com/golfcourse/smartCaddieHoleMap/golfCourse/KOR?watchHoleMapYn=Y>

